

4 EAST 9<sup>TH</sup>  
3 STREET  
3 BETWEEN 1<sup>ST</sup>  
AVENUE &  
AVENUE A

「AM  
PS」





# 433 EAST 9<sup>TH</sup> STREET BETWEEN 1<sup>ST</sup> AVENUE & AVENUE A

## Location

Between 1st Avenue and Avenue A

## Formerly

Sip + Co

## Rent

Upon Request

## Possession

Immediate

**G:** 500 SF

**Basement:** 350 SF

## Comments

- All uses considered
- Full prep area in basement with two walk-in refrigerators

## Neighbors

Apollo Bagels

STARBUCKS

DANNY & COOP'S  
CHEESESTEAKS

Thursday  
Kitchen

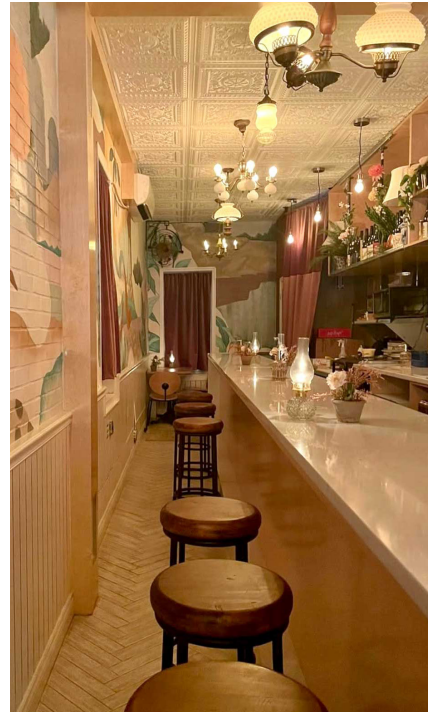
MOODY  
TONGUE

VILLAGE SQUARE  
PIZZA

Cafe Mozador

SUPERIORITY  
BURGER

## Interior



AM  
PS



**AMPS**



**433 EAST 9<sup>TH</sup> STREET**  
BETWEEN 1<sup>ST</sup> AVENUE & AVENUE A

**「AM  
PS」**

**PLEASE CONTACT OUR EXCLUSIVE LEASING AGENTS:**

**MAX SWERDLOFF**

O: 212.328.8663

M: 914.980.4874

[mswerdloff@ampsre.com](mailto:mswerdloff@ampsre.com)

**RIKARD CEDERBERG**

O: 929.695.8039

[rcederberg@ampsre.com](mailto:rcederberg@ampsre.com)