

299 & 301 NEWBURY STREET*

BACK BAY | BOSTON, MA



* Separate leases optional

LOCATION

Newbury St. between Gloucester St.
and Hereford St.

TERM

Long Term

ASKING RENT

Upon request

FORMERLY

Fred Perry
Woolrich

SIZE

	299	301
Walk Up:	1,038 Square Feet	1,073 Square Feet
Walk Down:	1,365 Square Feet	1,397 Square Feet

POSSESSION

Immediate

NEIGHBORS

FRAME, Bluemercury, Jenni Kayne, Levain Bakery, Alice + Olivia, Nike, Dr. Martens, Vuori, Anthropologie, lululemon, ZARA, State & Liberty, Allbirds, Bonobos, LUSH, Marine Layer, Marimekko, illesteva, Longchamp, Trend, Lilly, Pulitzer, Credo, Pure Glow, CAVA, Sweetgreen, Ben & Jerry's, J.P. Licks, Blue Bottle Coffee, The Capital Burger

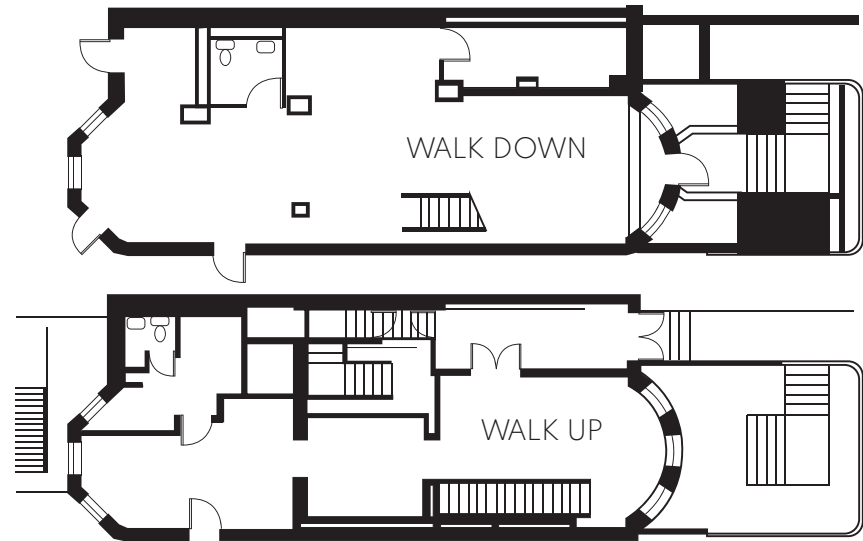
COMMENTS

- Newly Renovated
- 17 feet of frontage on Newbury
- Spaces can be combined for a total of 4,873 SF
- Flagship Opportunity
- More than 16 Million SF of office immediately surrounding
- Two blocks from MBTA Green Line Copley Station and Hynes Convention Center T Stops
- Median Age: 31 years old
- 72% Educational Attainment

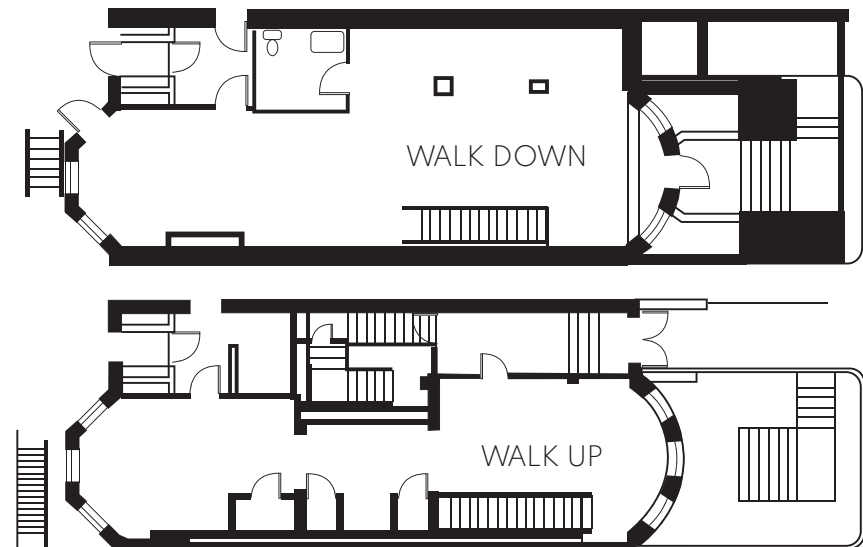
299 & 301 NEWBURY STREET

FLOOR PLAN

299



300



FOR INQUIRIES, PLEASE CONTACT

「AM
PS」

MATTHEW S. KRELL
mkrell@ampsre.com

DANIEL BODNER
dbodner@ampsre.com

MAX SWERDLOFF
mswerdloff@ampsre.com

LIBBY MILLER
lmiller@ampsre.com

 **DISTRICT**
REAL ESTATE ADVISORS

BECK DANGLER
beck@districtadvisors.com

