

1 ADAMS STREET

CORNER OF SANDS AND ADAMS STREET

「AM
PS」



1 ADAMS STREET



Location

Corner of Sands and Adams Street

Size

1,000 SF Ground Floor

Frontage

86'

Rent

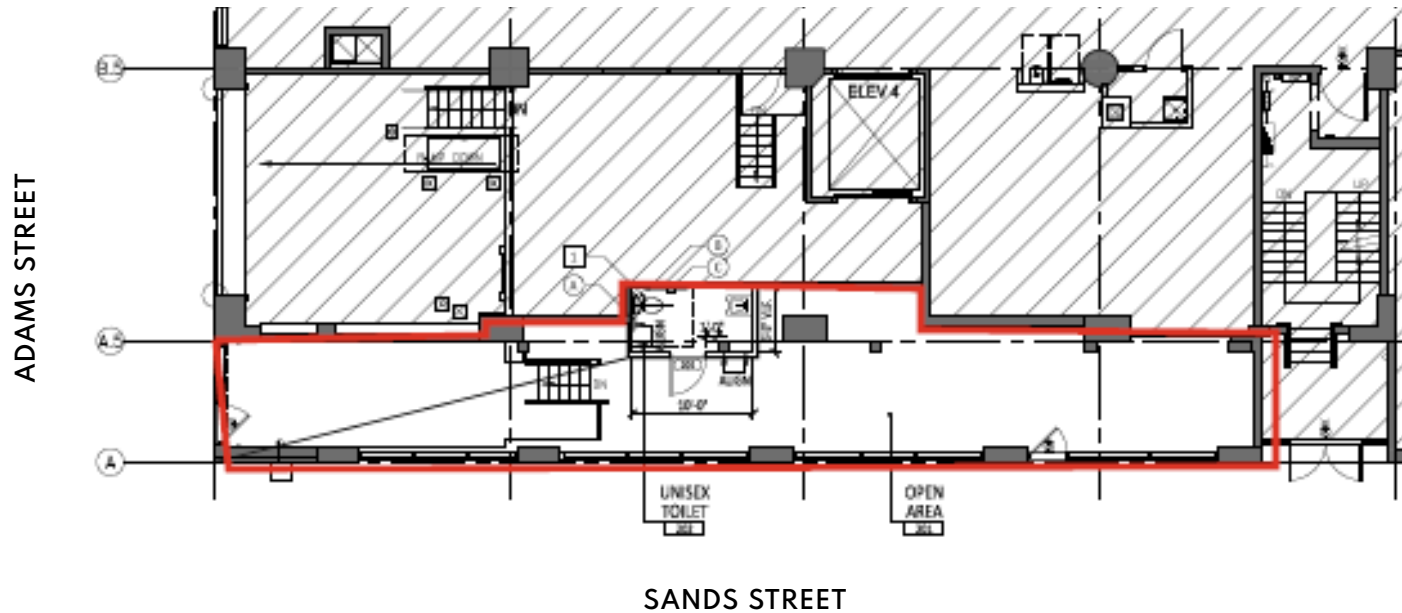
Upon Request

Possession

30 Days

Comments

- Garage door storefront
- At the base of Etsy's Headquarters
- Outdoor seating available
- All uses considered



1 ADAMS STREET

CORNER OF SANDS AND ADAMS STREET



\$ 203,427

AVERAGE HOUSEHOLD INCOME

\$ 3,332

MEDIAN RENT

40,620

PEOPLE PER SQUARE MILE

BICYCLE

22 MIN TO GRAND CENTRAL
23 MIN TO W'BURG

SUBWAY

22 MIN TO GRAND CENTRAL
14 MIN TO W'BURG

BUS

14 MIN TO FULTON STREET
8 MIN TO CADMAN

FERRY

25 MIN TO 34TH STREET
10 MIN TO W'BURG

1 ADAMS STREET

CORNER OF SANDS AND ADAMS STREET

「AM
PS」



1 ADAMS STREET

CORNER OF SANDS AND ADAMS STREET

「AM
PS」

PLEASE CONTACT OUR EXCLUSIVE LEASING AGENTS:

MAX SWERDLOFF
212.328.8663
mswerdloff@ampsre.com