

1162 BROADWAY

BETWEEN WEST 28TH AND 27TH STREETS

「AMP
PS」



1162 BROADWAY



Location

East side of Broadway between West 28th and 27th Streets

Size

900 SF (GF)

Ceiling Height

12' 1"

Rent

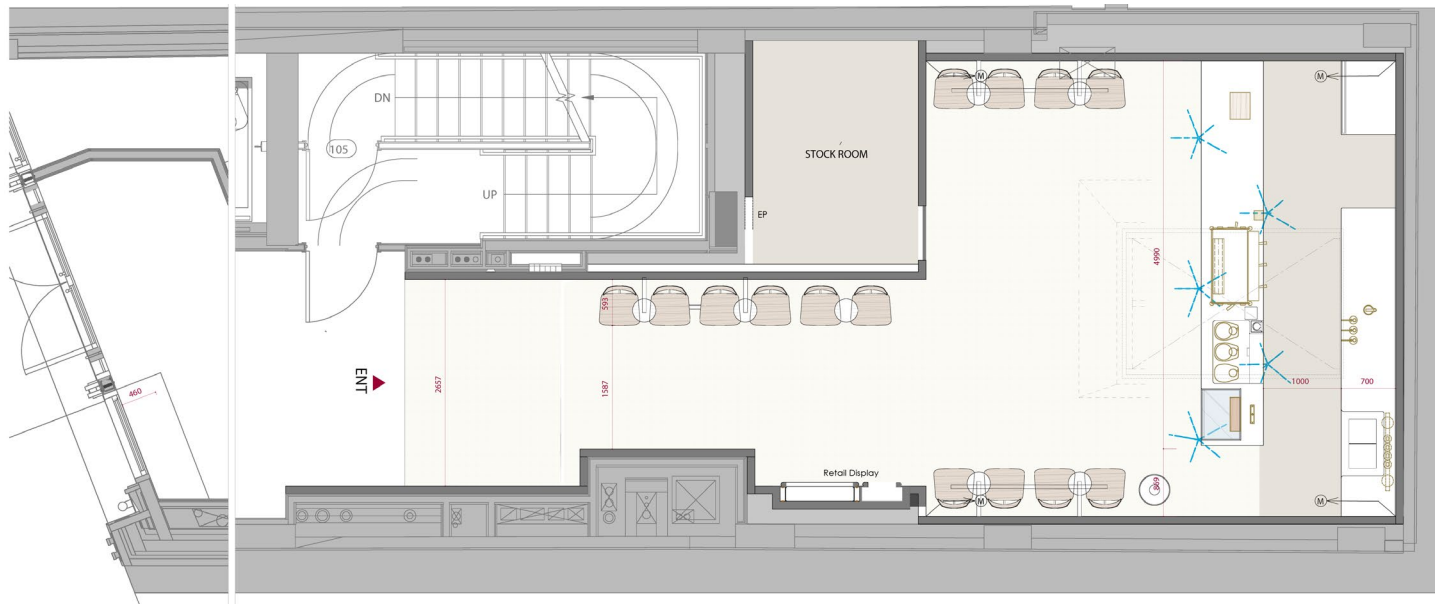
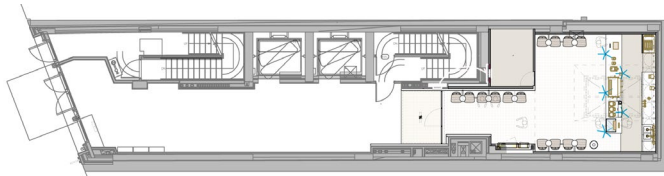
Upon Request

Possession

Immediate

Comments

- 900 SF café space at the base of a newly constructed boutique office building
- Soaring ceiling heights with skylight
- Shared common space in the office lobby (800 SF of additional space)
- Prime location in the heart of NoMad
- Steps away from Madison Square Park
- Soaring ceiling heights with skylight
- Next to the Ritz Carlton, Virgin Hotel, The Ned, Ace Hotel, and The Fifth Avenue Hotel



1162 BROADWAY

BETWEEN WEST 28TH AND 27TH STREETS



1162 BROADWAY

BETWEEN WEST 28TH AND 27TH STREETS

「AM
PS」



1162

BETWEEN WEST 28TH AND 27TH STREETS

BROADWAY

「AM
PS」

1162

BETWEEN WEST 28TH AND 27TH STREETS

BROADWAY

「AM
PS」

1162 BROADWAY

BETWEEN WEST 28TH AND 27TH STREETS

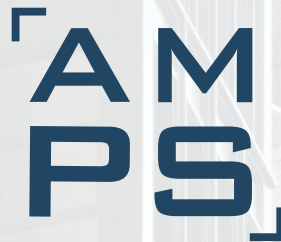
「AM
PS」



1162

BETWEEN WEST 28TH AND 27TH STREETS

BROADWAY



PLEASE CONTACT OUR EXCLUSIVE LEASING AGENTS:

CHRISTIAN STANTON
212.328.8566
cstanton@ampsre.com

LIBBY MILLER
212.763.1633
lmiller@ampsre.com