

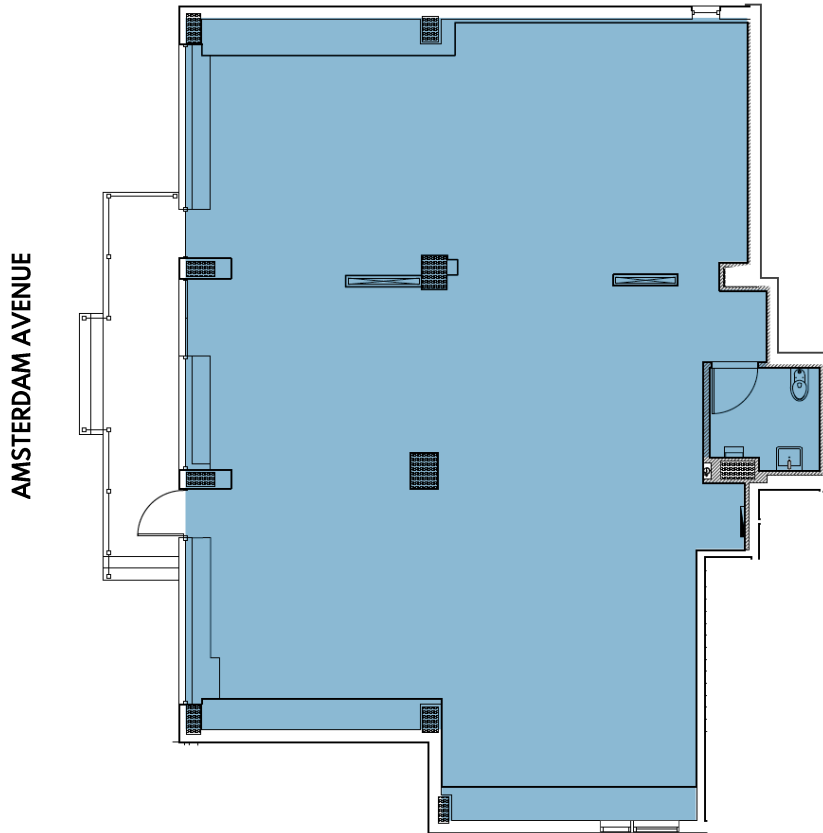


697 AMSTERDAM AVENUE

UPPER WEST SIDE | NEW YORK, NY

FLOOR PLANS

WEST 94TH STREET



LOCATION

Southeast Corner of
West 94th Street

SIZE

Ground 1,888 SF

FRONTAGE

Ground 48'

POSSESSION

Arranged

NEIGHBORS

Dunkin', Kouzan, West Side Wok
& Konata Sushi Bar, Talia's
Steakhouse, Gennaro Restaurant,
Albee Baby, Little Shop of Crafts,
Pio Pio, Citizen Bank, Plant Shed,
Izzy's Smokehouse

ASKING RENT

Upon Request

TERM

Negotiable

CURRENTLY

ChaShaMa

COMMENTS

- Corner location with expansive frontage and excellent visibility
- Space in white-box condition with bathroom in place
- Dry uses strongly preferred



Lucas Kooyman
Daisy Flotron

lkooyman@ampsre.com
dflotron@ampsre.com

917.438.2371
212.805.2605

AMPSRE.COM

This information has been secured from sources we believe to be reliable, but we make no representations as to the accuracy of the information. References to square footage are approximate. Tenant must verify the information and bears all risk for any inaccuracies.

697 AMSTERDAM AVENUE

UPPER WEST SIDE | NEW YORK, NY

INTERIOR PHOTOS



Lucas Kooyman
Daisy Flotron

lkooyman@ampsre.com
dflotron@ampsre.com

917.438.2371
212.805.2605

[AMPSRE.COM](https://www.ampsre.com)

This information has been secured from sources we believe to be reliable, but we make no representations as to the accuracy of the information. References to square footage are approximate. Tenant must verify the information and bears all risk for any inaccuracies.