

# 172 NEWBURY STREET

BACK BAY | BOSTON, MA



**LOCATION**

Newbury St. between Dartmouth St.  
and Exeter St.

**TERM**

Long Term

**ASKING RENT**

Upon request

**FORMERLY**

Up West

**SIZE**

Unit 10 – Walk Down: 1,512 Square Feet

**POSSESSION**

Immediate

**NEIGHBORS**

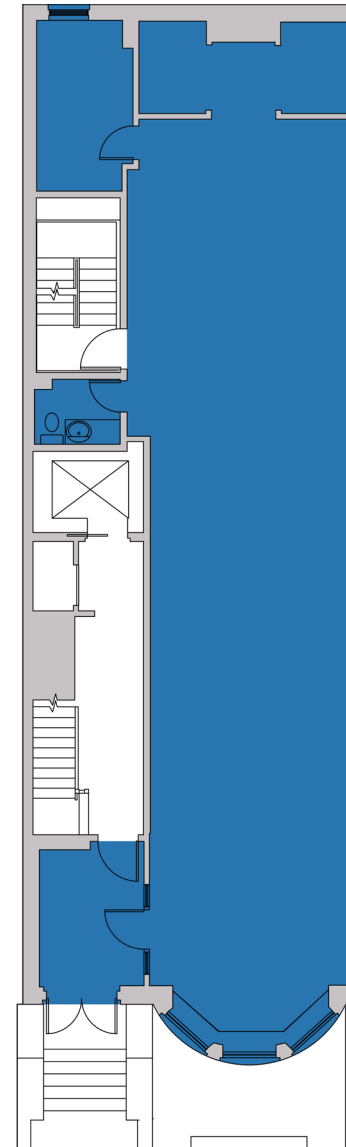
Away, Bluemercury, Nike, ALO, Zara, Google,  
Lululemon, Levain Bakery, Vuori, Princess Polly (coming  
soon), Ba&sh, Rails, Cotopaxi (coming soon), LUSH,  
Bond Vet, Blue Bottle Coffee, Ganni (coming soon),  
Credo, Allbirds, Parachute, Catbird, Veronica Beard

**COMMENTS**

- Prime Retail Space on Historic Newbury Street.
- More than 16 million SF of office immediately surrounding.
- Median Age: 31 years old
- Average HH Income: \$144,180
- 12 Million visitors per annum
- 72% Educational Attainment
- Walk score: 98

**FLOOR PLAN**

# 172 NEWBURY STREET



FOR INQUIRIES, PLEASE CONTACT

「AM  
PS」

 **DISTRICT**  
REAL ESTATE ADVISORS

**MATTHEW S. KRELL**  
mkrell@ampsre.com

**BECK DANGLER**  
beck@districtadvisors.com

**DAN BODNER**  
dbodner@ampsre.com

**RICH LOBKOWICZ**  
rich@districtadvisors.com

**MAX SWERDLOFF**  
mswerdloff@ampsre.com

**LIBBY MILLER**  
lmiller@ampsre.com