

337 NEWBURY STREET

BACK BAY | BOSTON, MA



 **BURTON**

DIESEL
www.diesel.com

 **anon.**

Be Immersed in The Mountains
Find Yours at anon.com

335

SUNLESS, INC.

LOCATION

Between Hereford Street
and Massachusetts Ave

TERM

Long Term

ASKING RENT

Upon request

CURRENTLY

Burton

SIZE

Ground Floor: +/- 1,987 Square Feet
Second Floor: +/- 1,273 Square Feet
Basement: +/- 2,009 Square Feet

POSSESSION

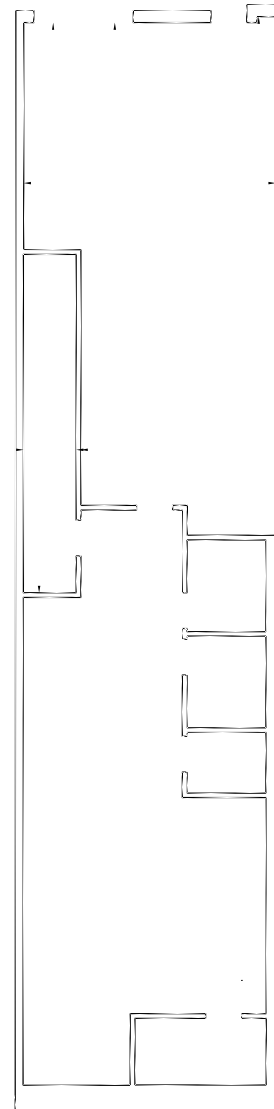
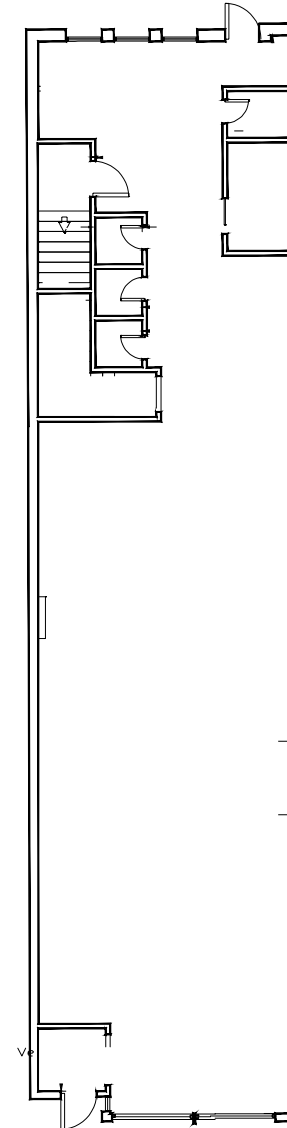
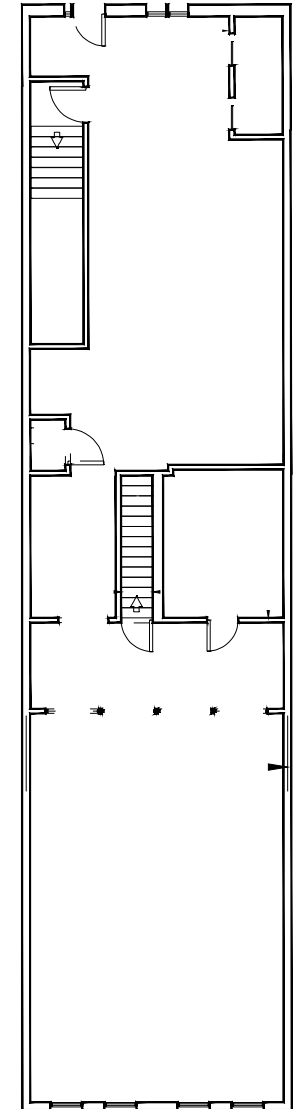
Arranged

NEIGHBORS

Arc'teryx, Patagonia, Reformation, Norrona, Champion, UNIQLO, Urban Outfitters, Diesel, Fjallraven, Madewell, The North Face, Room & Board, Ministry of Supply, Brandy Melville, Bo Concept, MUJI, Rothy's, Buck Mason, Sneaker Junkies, Suit Supply and Abercrombie & Fitch.

COMMENTS

- Incredibly rare, full building flagship opportunity on Newbury Street.
- Beautifully built out space in move in condition.
- \$1,263,851 median home value.
- Strong mix of local, regional and tourist customers.
- Close proximity to all major transportation.
- Daytime population: 161,858

FLOOR PLANS**BASEMENT****GROUND FLOOR****SECOND FLOOR**

337 NEWBURY STREET

FOR INQUIRIES, PLEASE CONTACT

「AM
PS」

 **DISTRICT**
REAL ESTATE ADVISORS

MATTHEW S. KRELL
mkrell@ampsre.com

BECK DANGLER
beck@districtadvisors.com

DAN BODNER
dbodner@ampsre.com

RICH LOBKOWICZ
rich@districtadvisors.com

MAX SWERDLOFF
mswerdloff@ampsre.com

LIBBY MILLER
lmiller@ampsre.com

