



525 W. 23RD STREET

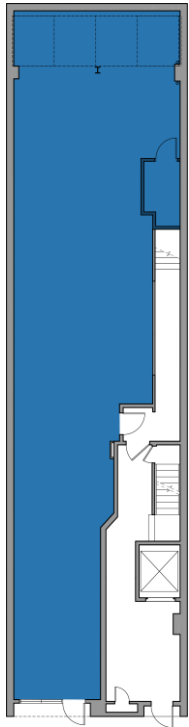
CHELSEA | NEW YORK, NY



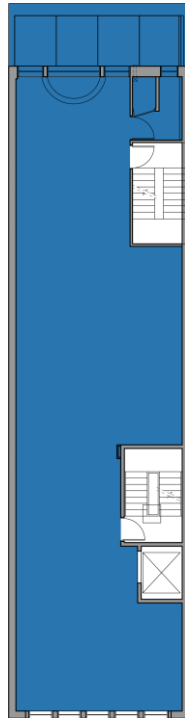
525 W. 23RD STREET

CHELSEA | NEW YORK, NY

FLOOR PLANS



GROUND



2ND FLOOR

LOCATION

Between Tenth & Eleventh Avenues

SIZE

Ground	2,300 SF
2 nd Floor	2,500 SF
Total	4,800 SF

FRONTAGE

Ground	14'
2 nd Floor	25'

CEILING HEIGHTS

Ground	11'
2 nd Floor	9'

NEIGHBORS

Jim Kempner Fine Art, George Billis Gallery, Asya Geisberg Gallery, Margaret Thatcher Projects, Nicolas Auvray Gallery, Fremin Gallery, The Mermaid Inn, Letter J, Crossing Art

ASKING RENT

Upon request

TERM

Negotiable

FORMERLY

Vacant

POSSESSION

Immediate

COMMENTS

- Historic, fully renovated cast-iron in the heart of Chelsea
- Spaces feature natural light at front and back of building, exposed brick, new HVAC and new bathrooms
- Spaces can be leased separately or together
- Second floor features outdoor space



Lucas Kooyman
Cindy Gecaj

lkooyman@ampsre.com
cgecaj@ampsre.com

917.438.2371
914.953.1309

[AMPSRE.COM](https://www.ampsre.com)

This information has been secured from sources we believe to be reliable, but we make no representations as to the accuracy of the information. References to square footage are approximate. Tenant must verify the information and bears all risk for any inaccuracies.