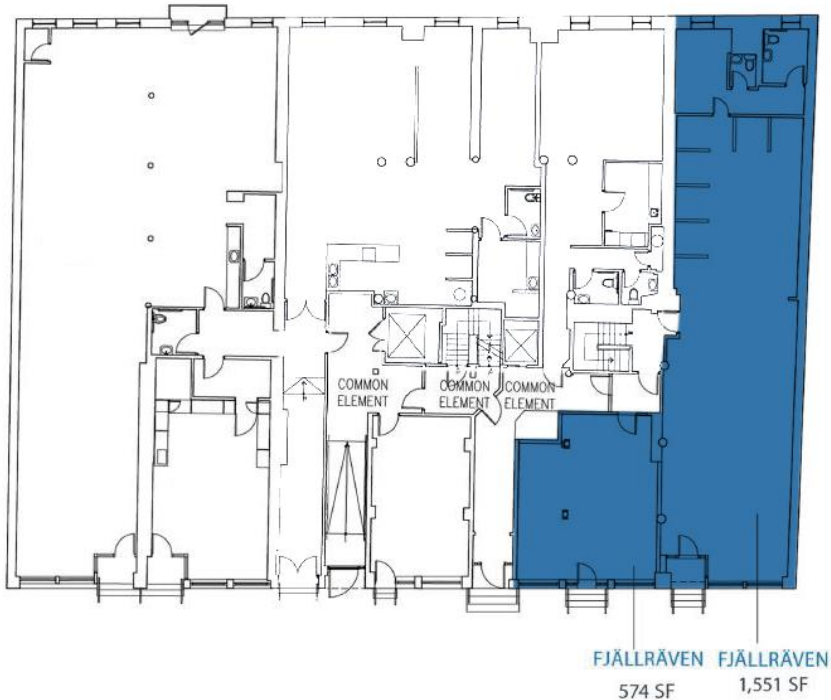




262 MOTT STREET

NOLITA | NEW YORK, NY

FLOOR PLAN



LOCATION

Between E. Houston
Street and Prince Street

SIZE

Ground 2,125 SF

FRONTAGE

30'

CEILING HEIGHTS

Ground 10' 8"
Stock Room 8'7"

NEIGHBORS

Café Gitane, Diptyque,
Everlane, Cuyana, Rothy's,
AimeLeon Dore, Faherty,
Marine Layer, Vince, Fair
Harbor, Velvet by Graham
& Spencer, Café Habana,
Aesop, Ahlem, Buck Mason,
Le Labo

ASKING RENT

Upon request

TERM

Sublease through 5/31/2025

FORMERLY

Fjällräven

POSSESSION

Arranged

COMMENTS

- Turn-key Nolita retail space with prominent frontage and architectural character
- Surrounded by a strong blend of high-end retailers and popular restaurants



Matthew S. Krell
Lucas Kooyman
Joshua A. Lewin
Daisy Flotron

mkrell@ampsre.com
lkooyman@ampsre.com
jlewin@ampsre.com
dflotron@ampsre.com

212.328.8537
917.438.2371
917.741.9209
212.401.0039

[AMPSRE.COM](https://www.ampsre.com)

This information has been secured from sources we believe to be reliable, but we make no representations as to the accuracy of the information. References to square footage are approximate. Tenant must verify the information and bears all risk for any inaccuracies.