

236 CLARENDON STREET

BACK BAY | BOSTON, MA

RETAIL SPACE
FOR LEASE

617.598.6390

236 Clarendon Street



ALVAREZ & MARSAL
PROPERTY SOLUTIONS

LOCATION

Corner of Clarendon St. and Public
Alley 435

TERM

Long Term

ASKING RENT

Upon request

CURRENTLY

Doyle

SIZE

Unit 110 - Ground 2,543 Square Feet

POSSESSION

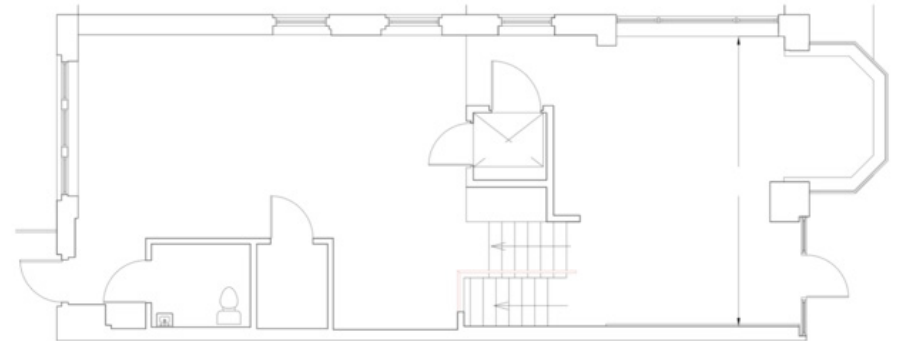
3/1/25

NEIGHBORS

FRAME, Bluemercury, Jenni Kayne, Levain Bakery, Alice + Olivia, Nike, Dr. Martens, Vuori, Anthropologie, lululemon, ZARA, State & Liberty, Allbirds, Bonobos, LUSH, Marine Layer, Marimekko, illesteva, INTERMIX, Longchamp, Trend, Lilly Pulitzer, Credo, Pure Glow, CAVA, Sweetgreen, Ben & Jerry's, J.P. Licks, Blue Bottle Coffee, The Capital Burger.

COMMENTS

- Beautifully built out retail space just steps off Newbury Street.
- 400 SF outdoor patio
- 23 feet of frontage on Clarendon.
- More than 16 million SF of office immediately surrounding.
- Median Age: 31 years old
- Average HH Income: \$144,180
- 12 Million visitors per annum
- 72% Educational Attainment
- Walk score: 98

FLOOR PLAN**INTERIOR**

FOR INQUIRIES, PLEASE CONTACT

「AM
PS」

MATTHEW S. KRELL
mkrell@ampsre.com

DANIEL BODNER
dbodner@ampsre.com

MAX SWERDLOFF
mswerdloff@ampsre.com

LIBBY MILLER
lmiller@ampsre.com

 **DISTRICT**
REAL ESTATE ADVISORS

BECK DANGLER
beck@districtadvisors.com

RICH LOBKOWICZ
rich@districtadvisors.com

RETAIL SPACE
FOR LEASE

617.598.6390

236 Clarendon Street



 **ALVAREZ & MARSAL**
PROPERTY SOLUTIONS

「AM
PS」