

154 NEWBURY STREET

BACK BAY | BOSTON, MA

PARACHUTE

PARACHUTE

Recycle Your
Home Linens Here

POWERED BY **supercircle**



Handicapped Accessible
Entrance to Retail located
at rear of building.



LOCATION

Newbury St. between Dartmouth St.
and Clarendon St.

TERM

Pop-Up, Short and Long Term

ASKING RENT

Upon request

FORMERLY

Tommy Bahama

SIZE

Unit 10 – Walk Down: **2,589 Square Feet**

POSSESSION

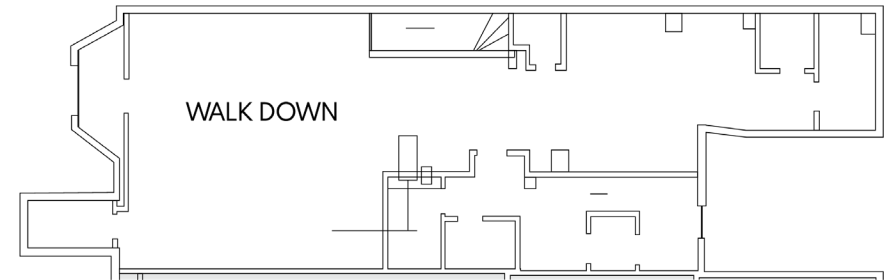
Immediate

NEIGHBORS

FRAME, Bluemercury, Jenni Kayne, Levain Bakery, Alice + Olivia, Nike, Dr. Martens, Vuori, Anthropologie, lululemon, ZARA, State & Liberty, Allbirds, Bonobos, LUSH, Marine Layer, Marimekko, illesteva, INTERMIX, Longchamp, Trend, Lilly Pulitzer, Credo, Pure Glow, CAVA, Sweetgreen, Ben & Jerry's, J.P. Licks, Blue Bottle Coffee, The Capital Burger.

COMMENTS

- Gorgeous Newbury Street Retail Space
- 15' of Frontage
- Daytime Population: 161,858
- 79% of the population ranges from ages 18-64
- Strong mix of local, regional and tourist customers.
- Close proximity to all major transportation.

FLOOR PLAN**INTERIOR**

FOR INQUIRIES, PLEASE CONTACT

「AM
PS」

PARACHUTE
DISTRICT
REAL ESTATE ADVISORS

MATTHEW S. KRELL
mkrell@ampsre.com

BECK DANGLER
beck@districtadvisors.com

DAN BODNER
dbodner@ampsre.com

RICH LOBKOWICZ
rich@districtadvisors.com

MAX SWERDLOFF
mswerdloff@ampsre.com

LIBBY MILLER
lmiller@ampsre.com