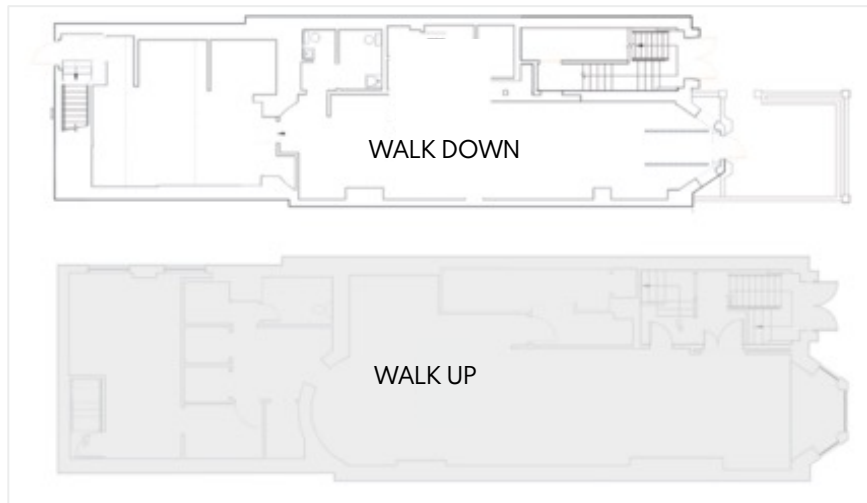




119 NEWBURY STREET

BACK BAY | BOSTON, MA

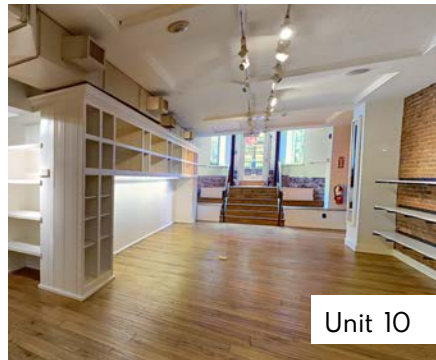
FLOOR PLAN



INTERIOR



Unit 100



Unit 10

LOCATION

Newbury St. between
Dartmouth St. and Clarendon St.

SIZE

Unit 10 - Walk Down 1,984 SF
Unit 100 - Walk Up approx. 1,960 SF

FORMERLY

Paddywax

NEIGHBORS

Simon Pearce, H&M Home,
VALENTINO, Loro Piana, LUSH,
Marine Layer, Bonobos, rag &
bone, Faherty, Riccardi, Sea Bags,
Trend, Marimekko, Longchamp,
L'elite Boutique, Lilly Pulitzer,
SEPHORA, Ralph Lauren,
Sunglasses Hut, Victoria's Secret.

ASKING RENT

Upon request

TERM

Pop - Up, Short and Long Term

POSSESSION

Immediate

COMMENTS

- Retail space in the heart of Newbury Street
- 15' of Frontage
- Daytime population: 161,858
- Strong mix of local, regional and tourist customers.
- Close proximity to all major transportation.



Matthew S. Krell
Fritz M. Kemerling
Daniel A. Bodner
Joshua T. Kaidanow

mkrell@amp-solutions.com
fkemerling@amp-solutions.com
dbodner@amp-solutions.com
jkaidanow@amp-solutions.com

212.328.8740
212.461.5971
212.401.0039
212.466.6003

AMP-SOLUTIONS.COM

This information has been secured from sources we believe to be reliable, but we make no representations as to the accuracy of the information. References to square footage are approximate. Tenant must verify the information and bears all risk for any inaccuracies.