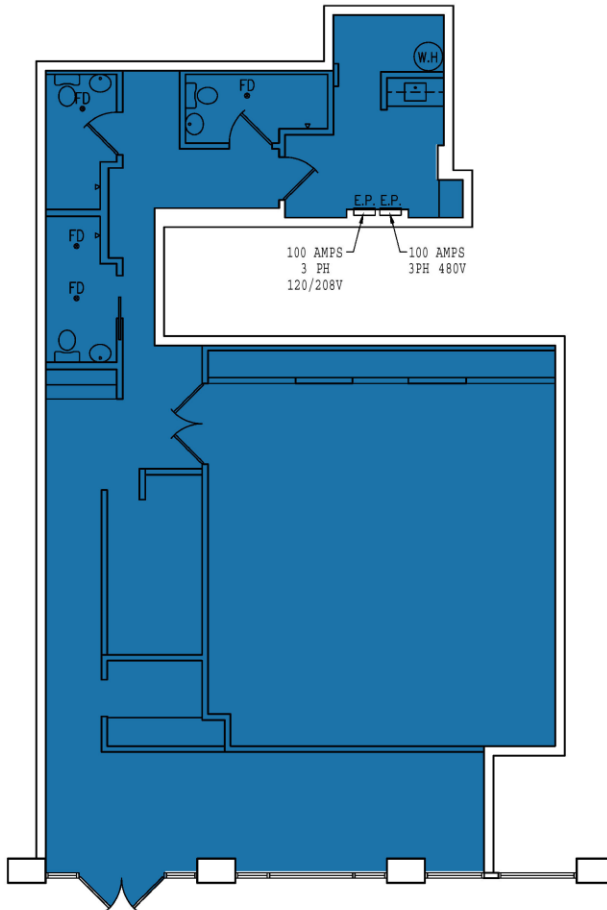




1125 MAXWELL LANE

HOBOKEN | NEW JERSEY

FLOOR PLAN



LOCATION

11th St. Between Sinatra Dr.
North and Maxwell Ln.

SIZE

1,794 SF

HISTORY

Local Barre

POSSESSION

Immediate

NEIGHBORS

Martha's Hoboken, Paris Baguette,
Solidcore, Starbucks, 16 Handles,
Massage Envy, Hoboken Vets, City
Bistro, W. Kodak Jewelers, CVS,
Chase Bank, Hoboken Historical
Museum, Pilsener Haus Biergarten,
Hoboken 14th Street Pier

FRONTAGE

On 11th St.

CEILING HEIGHTS

Ground Floor: +/- 10 feet

ASKING RENT

Upon request

TERM

Long Term

COMMENTS

- Built fitness studio
- Short walk to Hoboken waterfront
- Multiple parks within walking distance
- Venting possible
- Outdoor seating possible



DANIEL A. BODNER
DAISY FLOTRON

DBODNER@AMPSRE.COM | 212.328.8537
DFLOTRON@AMPSRE.COM | 212.805.2605

[AMPSRE.COM](https://www.ampsre.com)

This information has been secured from sources we believe to be reliable, but we make no representations as to the accuracy of the information. References to square footage are approximate. Tenant must verify the information and bears all risk for any inaccuracies.