

160 NEWBURY STREET

BACK BAY | BOSTON, MA

ART GALLERY

bluemercury



160

bluemercury
makeup • skincare • spa
bluemercury
makeup • skincare • spa



bluemercury
makeup • skincare • spa



LOCATION

Newbury St. between Dartmouth St.
and Exeter St.

TERM

Long Term

ASKING RENT

Upon request

FORMERLY

Sitka Home

SIZE

Unit 10 - Walk Down: **2,005 Square Feet**

POSSESSION

Arranged

NEIGHBORS

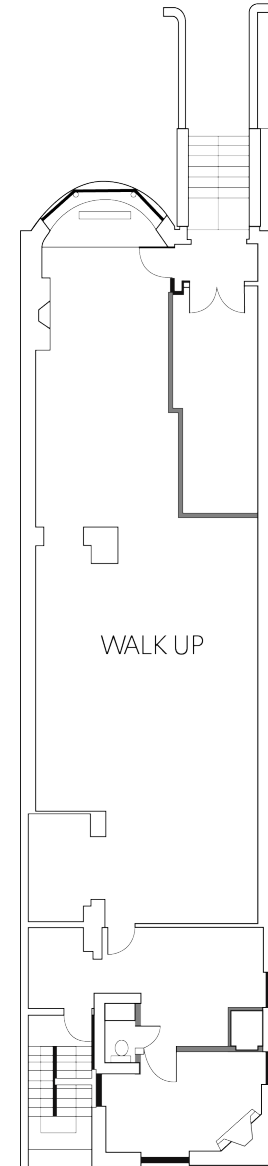
FRAME, Bluemercury, Jenni Kayne, Levain Bakery, Alice + Olivia, Nike, Dr. Martens, Vuori, Anthropologie, lululemon, ZARA, State & Liberty, Allbirds, Bonobos, LUSH, Marine Layer, Marimekko, illesteva, INTERMIX, Longchamp, Trend, Lilly Pulitzer, Credo, Pure Glow, CAVA, Sweetgreen, Ben & Jerry's, J.P. Licks, Blue Bottle Coffee, The Capital Burger.

COMMENTS

- Prime Newbury Street Retail Space
- 14'10" of Frontage
- 79% of the population ranges from ages 18-64
- Strong mix of local, regional and tourist customers
- Close proximity to all major transportation

FLOOR PLAN

160 NEWBURY STREET



FOR INQUIRIES, PLEASE CONTACT

AM
PS



DISTRICT
REAL ESTATE ADVISORS

MATTHEW S. KRELL

mkrell@ampsre.com

BECK DANGLER

beck@districtadvisors.com

DAN BODNER

dbodner@ampsre.com

RICH LOBKOWICZ

rich@districtadvisors.com

MAX SWERDLOFF

mswerdloff@ampsre.com

LIBBY MILLER

lmiller@ampsre.com