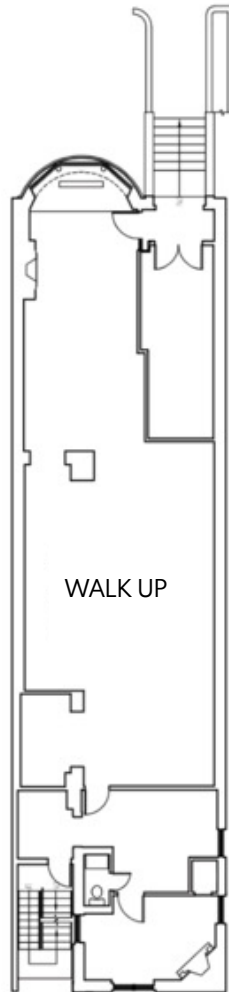




# 160 NEWBURY STREET

BACK BAY | BOSTON, MA

## FLOOR PLAN



## LOCATION

Newbury St. between  
Dartmouth St. and Exeter St.

## ASKING RENT

Upon request

## SIZE

Unit 100 - Walk Up 2,005 SF

## TERM

Pop - Up, Short and Long Term

## CURRENTLY

Alps and Meters (Pop-up)

## POSSESSION

Arranged

## NEIGHBORS

Bluemercury, Soodee, Aesop,  
Alice + Olivia, Nike, Dr. Martens,  
Timberland, Anthropologie,  
lululemon, ZARA, State &  
Liberty, Allbirds, Bonobos, LUSH,  
Marine Layer, Marimekko,  
illesteva, INTERMIX, Longchamp,  
Trend, Lilly Pulitzer, Credo, Pure  
Glow, CAVA, Sweetgreen, Ben  
& Jerry's, J.P. Licks, Blue Bottle  
Coffee, The Capital Burger.

## COMMENTS

- Prime Newbury Street Retail Space
- 14'10" of Frontage
- 79% of the population ranges from ages 18-64
- Strong mix of local, regional and tourist customers.
- Close proximity to all major transportation.



Matthew S. Krell  
Fritz M. Kemerling  
Daniel A. Bodner  
Joshua T. Kaidanow

mkrell@amp-solutions.com  
fkemerling@amp-solutions.com  
dbodner@amp-solutions.com  
jkaidanow@amp-solutions.com

212.328.8740  
212.461.5971  
212.401.0039  
212.466.6003

[AMP-SOLUTIONS.COM](http://AMP-SOLUTIONS.COM)

This information has been secured from sources we believe to be reliable, but we make no representations as to the accuracy of the information. References to square footage are approximate. Tenant must verify the information and bears all risk for any inaccuracies.